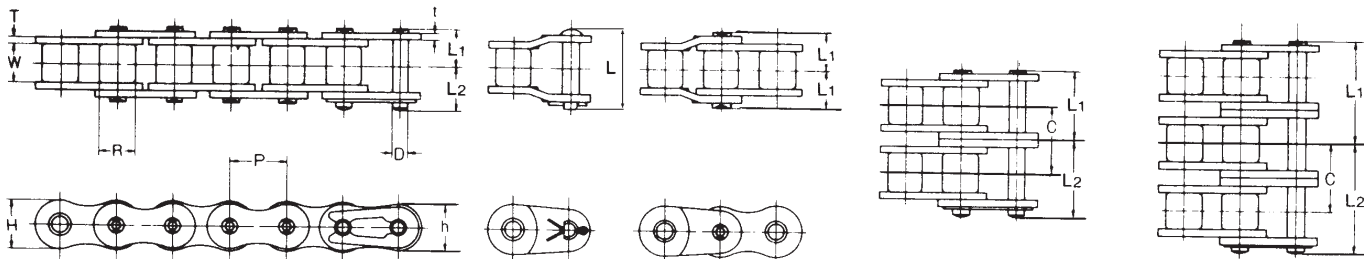


TSUBAKI BS/DIN DRIVE CHAINS

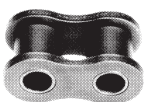


TSUBAKI Chain No.	ISO BS/DIN No.	Pitch P	Roller dia. R	Inner Width W	Pin			Link plate				Transverse pitch C	Minimum Tensile Strength kN	Bearing Area cm ²	Approx. Mass. kg/m	No. of links per 5m
					D	L ₁	L ₂	T	t	H	h					
SIMPLEX																
RS06B•	06B	9.525	6.35	5.72	3.28	6.35	7.65	1.27	1.0	8.2	8.2	-	9.0	0.28	0.39	525
RS08B	08B	12.700	8.51	7.75	4.45	8.40	10.00	1.60	1.6	11.8	10.4	-	19.0	0.50	0.70	393
RS10B	10B	15.875	10.16	9.65	5.08	9.55	11.25	1.50	1.5	14.7	13.7	-	23.0	0.67	0.95	315
RS12B	12B	19.050	12.07	11.68	5.72	11.20	13.10	1.60	1.8	16.1	16.1	-	31.0	0.89	1.25	263
RS16B	16B	25.400	15.88	17.02	8.28	17.90	19.95	4.00	3.2	21.0	21.0	-	70.0	2.10	2.70	197
RS20B	20B	31.750	19.05	19.56	10.19	19.90	23.10	4.40	3.4	26.0	26.0	-	98.1	2.95	3.85	157
RS24B	24B	38.100	25.40	25.40	14.63	26.65	31.85	6.00	5.6	33.4	31.2	-	167.0	5.54	7.45	131
RS28B	28B	44.450	27.94	30.99	15.90	32.45	37.45	7.50	6.3	36.4	36.4	-	200.0	7.40	9.45	113
RS32B	32B	50.800	29.21	30.99	17.81	32.10	37.70	7.00	6.3	42.2	41.6	-	255.0	8.11	10.25	99
RS40B	40B	63.500	39.37	38.10	22.89	39.25	45.05	8.50	8.0	52.9	52.0	-	373.0	12.76	16.35	79
DUPLEX																
RS06B-2• ^Δ	06B-2	9.525	6.35	5.72	3.28	11.43	12.57	1.27	1.0	8.2	8.2	10.24	17.0	0.56	0.75	525
RS08B-2•	08B-2	12.700	8.51	7.75	4.45	15.30	16.90	1.60	1.6	11.8	10.4	13.92	36.5	1.00	1.35	393
RS10B-2	10B-2	15.875	10.16	9.65	5.08	17.85	19.55	1.50	1.5	14.7	13.7	16.59	44.5	1.34	1.85	315
RS12B-2	12B-2	19.050	12.07	11.68	5.72	20.85	22.75	1.80	1.8	16.1	16.1	19.46	61.0	1.78	2.50	263
RS16B-2	16B-2	25.400	15.88	17.02	8.28	33.55	35.75	4.00	3.2	21.0	21.0	31.88	128.0	4.20	5.40	197
RS20B-2	20B-2	31.750	19.05	19.56	10.19	38.25	41.45	4.40	3.4	26.0	26.0	36.45	197.0	5.90	7.65	157
RS24B-2	24B-2	38.100	25.40	25.40	14.63	50.80	56.00	6.00	5.6	33.4	31.2	48.36	335.0	11.08	14.65	131
RS28B-2	28B-2	44.450	27.94	30.99	15.90	62.15	67.15	7.50	6.3	36.4	36.4	59.56	374.0	14.80	18.80	113
RS32B-2	32B-2	50.800	29.21	30.99	17.81	61.25	66.85	7.00	6.3	42.2	41.6	58.55	485.0	16.22	20.10	99
RS40B-2	40B-2	63.500	39.37	38.10	22.89	75.40	81.20	8.50	8.0	52.9	52.0	72.29	716.0	25.52	32.00	79
TRIPLEX																
RS06B-3• ^Δ	06B-3	9.525	6.35	5.72	3.28	16.90	17.5	1.27	1.0	8.2	8.2	10.24	24.9	0.84	1.13	525
RS08B-3 ^Δ	08B-3	12.700	8.51	7.75	4.45	22.25	23.85	1.60	1.6	11.8	10.4	13.92	56.0	1.50	2.00	393
RS10B-3	10B-3	15.875	10.16	9.65	5.08	26.15	27.85	1.50	1.5	14.7	13.7	16.59	66.8	2.01	2.80	315
RS12B-3	12B-3	19.050	12.07	11.68	5.72	30.60	32.50	1.80	1.8	16.1	16.1	19.46	92.0	2.67	3.80	263
RS16B-3	16B-3	25.400	15.88	17.02	8.28	49.50	51.70	4.00	3.2	21.0	21.0	31.88	192.0	6.30	8.00	197
RS20B-3	20B-3	31.750	19.05	19.56	10.19	56.50	59.70	4.40	3.4	26.0	26.0	36.45	295.0	8.85	11.45	157
RS24B-3	24B-3	38.100	25.40	25.40	14.63	75.10	80.20	6.00	5.6	33.4	31.2	48.36	500.0	16.62	21.75	131
RS28B-3	28B-3	44.450	27.94	30.99	15.90	91.95	96.95	7.50	6.3	36.4	36.4	59.56	560.0	22.20	28.20	113
RS32B-3	32B-3	50.800	29.21	30.99	17.81	90.50	96.10	7.00	6.3	42.2	41.6	58.55	729.0	24.33	29.90	99
RS40B-3	40B-3	63.500	39.37	38.10	22.89	111.50	117.30	8.50	8.0	52.9	52.0	72.29	1080.0	38.28	47.75	79

Not: *Flat shape Link plate*
Middle link plate with one solid plate

ATTACHMENTS

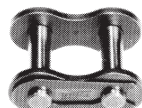
Innerlink



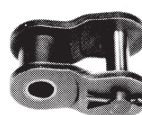
Pinlink



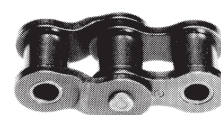
Con. Link with spring clip alt. cottored pin



Offset Link

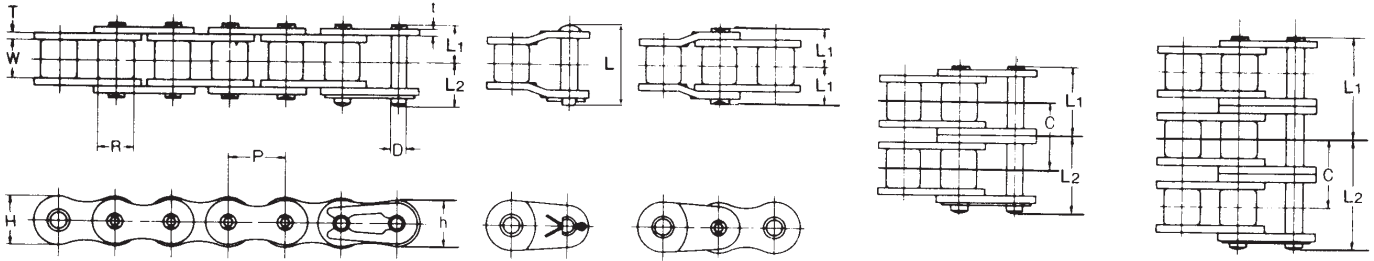


2-Pitch offset Link



Reservation for dimensional changes
Dimensions in mm

TSUBAKI ANSI DRIVE CHAINS



Riveted version

Chain No.	Pitch P	Roller diam. R	Inner Width W	Link Plate			D	Pin				Transverse Pitch C	Average Tensile strength kN	Max allowable tension kN	Approx mass kg/m	
				T	H	h		L ₁ +L ₂	L ₁	L ₂	L					
SIMPLEX																
RS 25-1•	6.350	3.30	3.18	0.75	5.84	5.05	2.31	8.6	3.80	4.80	–	–	4.71	0.64	0.14	
RS 35-1•	9.525	5.08	4.78	1.25	9.00	7.80	3.59	12.7	5.82	6.85	13.5	–	11.30	2.16	0.33	
RS 40-1	12.700	7.95	7.95	1.50	12.00	10.40	3.97	18.2	8.25	9.95	18.0	–	19.10	3.63	0.64	
RS 50-1	15.875	10.16	9.53	2.00	15.00	13.00	5.09	22.3	10.30	12.00	22.5	–	31.40	6.37	1.04	
RS 60-1	19.050	11.91	12.70	2.40	18.10	15.60	5.96	27.6	12.85	14.75	28.2	–	44.10	8.83	1.53	
RS 80-1	25.400	15.88	15.88	3.20	24.10	20.80	7.94	35.5	16.25	19.25	36.0	–	78.50	14.70	2.66	
RS 100-1	31.750	19.05	19.05	4.00	30.10	26.00	9.54	42.6	19.75	22.85	44.4	–	118.00	22.60	3.99	
RS 120-1	38.100	22.23	25.40	4.80	36.20	31.20	11.11	53.8	24.90	28.90	55.8	–	167.00	30.40	5.93	
RS 140-1	44.450	25.40	25.40	5.60	42.40	36.40	12.71	58.6	26.90	31.70	60.5	–	216.00	40.20	7.49	
RS 160-1	50.800	28.58	31.75	6.40	48.20	41.60	14.29	68.7	31.85	36.85	71.0	–	270.00	53.00	10.10	
RS 180-1	57.150	35.71	35.72	7.15	54.20	46.80	17.46	78.1	35.65	42.45	80.6	–	358.00	60.80	13.45	
RS 200-1	63.500	39.68	38.10	8.00	60.30	52.00	19.85	83.8	39.00	44.80	87.3	–	461.00	71.60	16.49	
RS 240-1	76.200	47.63	47.63	9.50	72.40	62.40	23.81	103.4	47.90	55.50	106.7	–	677.00	99.00	24.50	
DUPLEX																
RS 25-2•	6.350	3.30	3.18	0.75	5.84	5.05	2.31	15.0	7.00	8.00	–	6.4	9.41	1.08	0.27	
RS 35-2•	9.525	5.08	4.78	1.25	9.00	7.80	3.59	22.8	10.90	11.90	24.5	10.1	22.60	3.63	0.69	
RS 40-2	12.700	7.95	7.95	1.50	12.00	10.40	3.97	32.6	15.45	17.15	33.5	14.4	38.20	6.18	1.27	
RS 50-2	15.875	10.16	9.53	2.00	15.00	13.00	5.09	40.5	19.35	21.15	41.8	18.1	62.80	10.70	2.07	
RS 60-2	19.050	11.91	12.70	2.40	18.10	15.60	5.96	50.5	24.25	26.25	52.6	22.8	88.30	15.00	3.04	
RS 80-2	25.400	15.88	15.88	3.20	24.10	20.80	7.94	64.8	30.90	33.90	67.5	29.3	157.00	25.00	5.27	
RS 100-2	31.750	19.05	19.05	4.00	30.10	26.00	9.54	78.5	37.70	40.80	81.5	35.8	235.00	38.30	7.85	
RS 120-2	38.100	22.23	25.40	4.80	36.20	31.20	11.11	99.2	47.60	51.60	103.2	45.4	320.00	51.70	11.70	
RS 140-2	44.450	25.40	25.40	5.60	42.40	36.40	12.71	107.5	51.35	56.15	112.3	48.9	420.00	68.40	14.83	
RS 160-2	50.800	28.58	31.75	6.40	48.20	41.60	14.29	127.3	61.15	66.15	132.2	58.5	530.00	90.00	20.04	
RS 180-2	57.150	35.71	35.72	7.15	54.20	46.80	17.46	144.1	68.75	75.35	151.1	65.8	716.00	103.00	26.52	
RS 200-2	63.500	39.68	38.10	8.00	60.30	52.00	19.85	155.5	74.85	80.65	161.2	71.6	922.00	122.00	32.63	
RS 240-2	76.200	47.63	47.63	9.50	72.40	62.40	23.81	191.3	91.90	99.40	198.4	87.8	1350.00	168.00	48.10	
TRIPLEX																
RS 25-3•	6.350	3.30	3.18	0.75	5.84	5.05	2.31	21.4	10.20	11.20	–	6.4	14.10	1.57	0.42	
RS 35-3•	9.525	5.08	4.78	1.25	9.00	7.80	3.59	32.9	16.00	16.90	34.6	10.1	33.80	5.39	1.05	
RS 40-3	12.700	7.95	7.95	1.50	12.00	10.40	3.97	46.8	22.65	24.15	47.9	14.4	57.40	9.12	1.90	
RS 50-3	15.875	10.16	9.53	2.00	15.00	13.00	5.09	58.6	28.40	30.20	59.9	18.1	94.10	16.00	3.09	
RS 60-3	19.050	11.91	12.70	2.40	18.10	15.60	5.96	73.8	35.65	38.15	75.5	22.8	132.00	22.10	4.54	
RS 80-3	25.400	15.88	15.88	3.20	24.10	20.80	7.94	94.1	45.60	48.50	96.9	29.3	235.00	36.80	7.89	
RS 100-3	31.750	19.05	19.05	4.00	30.10	26.00	9.54	114.4	55.65	58.75	117.3	35.8	353.00	56.40	11.77	
RS 120-3	38.100	22.23	25.40	4.80	36.20	31.20	11.11	144.8	70.40	74.40	148.6	45.4	480.00	76.00	17.53	
RS 140-3	44.450	25.40	25.40	5.60	42.40	36.40	12.71	156.6	75.85	80.75	161.3	48.9	630.00	101.00	22.20	
RS 160-3	50.800	28.58	31.75	6.40	48.20	41.60	14.29	185.9	90.45	95.45	190.7	58.5	794.00	132.00	30.02	
RS 180-3	57.150	35.71	35.72	7.15	54.20	46.80	17.46	210.2	101.70	108.50	216.9	65.8	1017.00	152.00	38.22	
RS 200-3	63.500	39.68	38.10	8.00	60.30	52.00	19.85	227.2	110.75	116.45	233.0	71.6	1380.00	179.00	49.02	
RS 240-3	76.200	47.63	47.63	9.50	72.40	62.40	23.81	279.0	135.85	143.15	286.3	87.8	2030.00	248.00	71.60	

4-, 5- and 6 strand on request, partly in stock.

Version with cottored pin on request.

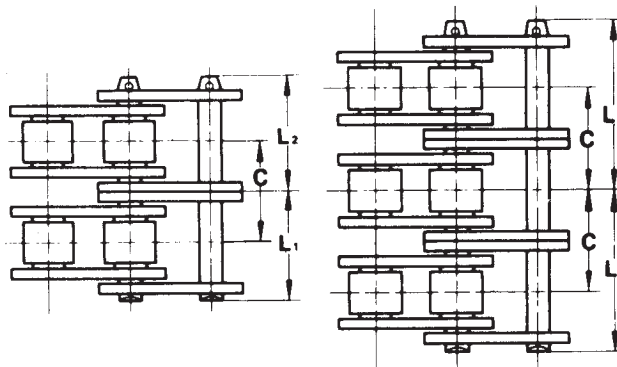
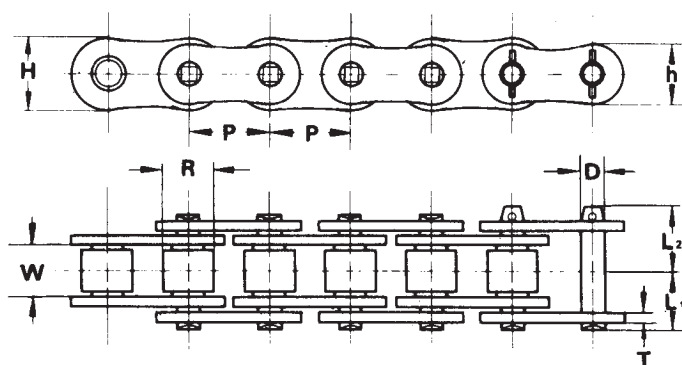
Buschain

Attachments on request

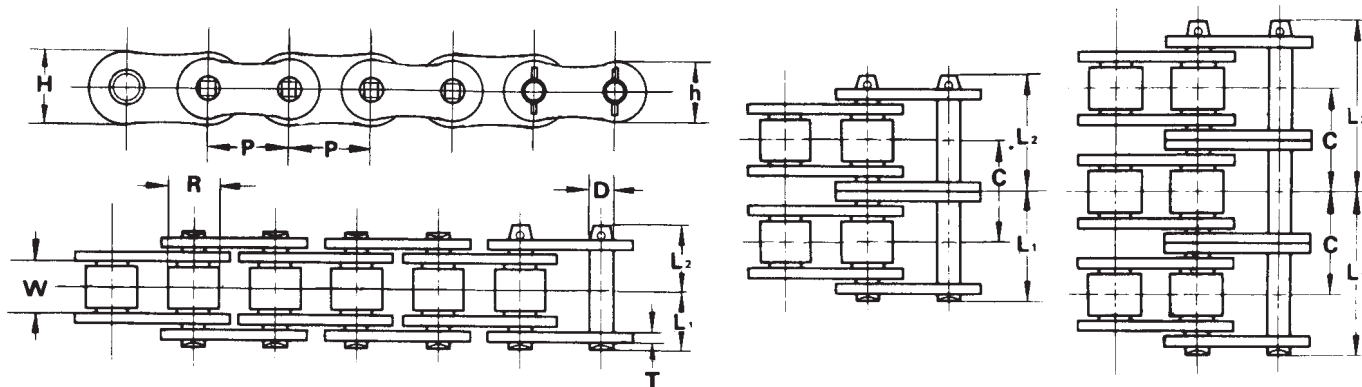
Reservation for dimensional changes

Dimensions in mm

TSUBAKI ANSI HEAVY DRIVE CHAINS

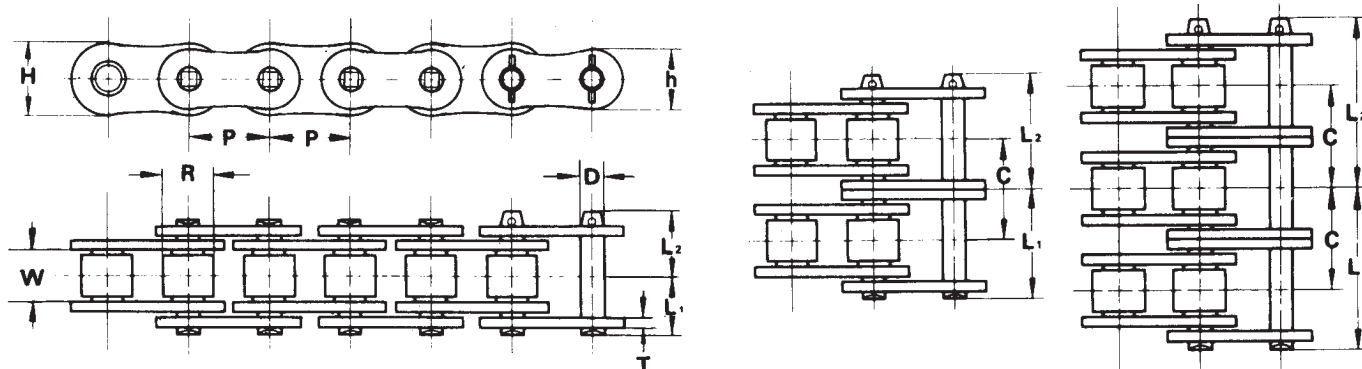


Chain No.	Pitch P	Roller dia. R	Inner Width W	Link Plate			Pin			Transverse Pitch C	Average tensile strength kN	Max allowable tension kN	Approx Mass kg/m
				T	H	h	D	L ₁	L ₂				
SIMPLEX													
RS 60H	19.05	11.91	12.70	3.2	18.1	15.6	5.96	14.55	16.95	—	44.1	9.81	1.80
RS 80H	25.40	15.88	15.88	4.0	24.1	20.8	7.94	18.30	20.90	—	78.5	16.20	3.11
RS 100H	31.75	19.05	19.05	4.8	30.1	26.0	9.54	21.80	24.50	—	118	24.50	4.58
RS 120H	38.10	22.23	25.40	5.6	36.2	31.2	11.11	26.95	30.55	—	167	32.40	6.53
RS 140H	44.45	25.40	25.40	6.4	42.2	36.4	12.71	28.90	33.10	—	216	42.70	8.27
RS 160H	50.80	28.58	31.75	7.2	48.2	41.6	14.29	33.95	38.45	—	270	55.90	10.97
RS 200H	63.50	39.69	38.10	9.5	60.3	52.0	19.85	42.40	48.20	—	461	78.50	18.41
RS 240H	76.20	47.63	47.63	12.7	72.4	62.4	23.81	54.80	62.30	—	677	113.00	29.13
DUPLEX													
RS 60H-2	19.05	11.91	12.70	3.2	18.1	15.6	5.96	27.50	30.00	26.1	88.3	16.70	3.59
RS 80H-2	25.40	15.88	15.88	4.0	24.1	20.8	7.94	34.60	37.20	32.6	157	27.60	6.18
RS 100H-2	31.75	19.05	19.05	4.8	30.1	26.0	9.54	41.40	44.10	39.1	235	41.70	9.03
RS 120H-2	38.10	22.23	25.40	5.6	36.2	31.2	11.11	51.40	55.00	48.9	320	55.00	12.90
RS 140H-2	44.45	25.40	25.40	6.4	42.2	36.4	12.71	55.00	59.50	52.2	420	72.60	16.38
RS 160H-2	50.80	28.58	31.75	7.2	48.2	41.6	14.29	64.95	69.45	61.9	530	95.00	21.78
RS 200H-2	63.50	39.69	38.10	9.5	60.3	52.0	19.85	81.60	87.40	78.3	922	133.00	36.47
RS 240H-2	76.20	47.63	47.63	12.7	72.4	62.4	23.81	105.30	113.30	101.2	1350	192.00	57.35
TRIPLEX													
RS 60H-3	19.05	11.91	12.70	3.2	18.1	15.6	5.96	41.00	43.70	26.1	132	24.50	5.36
RS 80H-3	25.40	15.88	15.88	4.0	24.1	20.8	7.94	50.75	53.85	32.6	235	40.50	9.24
RS 100H-3	31.75	19.05	19.05	4.8	30.1	26.0	9.54	60.95	63.75	39.1	353	61.30	13.54
RS 120H-3	38.10	22.23	25.40	5.6	36.2	31.2	11.11	75.80	79.60	48.9	480	80.90	19.33
RS 140H-3	44.45	25.40	25.40	6.4	42.2	36.4	12.71	81.05	85.60	52.2	630	107.00	24.54
RS 160H-3	50.80	28.58	31.75	7.2	48.2	41.6	14.29	95.40	100.60	61.9	794	140.00	32.63
RS 200H-3	63.50	39.69	38.10	9.5	60.3	52.0	19.85	120.90	126.20	78.3	1380	196.00	54.77
RS 240H-3	76.20	47.63	47.63	12.7	72.4	62.4	23.81	155.05	163.15	101.2	2030	282.00	85.47



Chain No.	Pitch P	Roller dia. R	Inner Width W	Link Plate			Pin			Transverse Pitch C	Average tensile strength kN	Max allowable tension kN	Approx Mass kg/m
				T	H	h	D	L ₁	L ₂				
SIMPLEX													
SUPER 80	25.40	15.88	15.88	3.2	24.1	20.8	7.94	16.25	19.25	–	84.3	18.6	2.81
SUPER 100	31.75	19.05	19.05	4.0	30.1	26.0	9.54	19.75	22.85	–	127.0	30.4	4.25
SUPER 120	38.10	22.23	25.40	4.8	36.2	31.2	11.11	24.90	28.90	–	186.0	39.2	6.30
SUPER 140	44.45	25.40	25.40	5.6	42.2	36.4	12.71	26.90	31.70	–	245.0	53.9	8.04
SUPER 160	50.80	28.58	31.75	6.4	48.2	41.6	14.29	31.85	36.85	–	314.0	70.6	10.79
SUPER 200	63.50	39.69	38.10	8.0	60.3	52.0	19.85	39.00	44.80	–	490.0	94.1	17.63
SUPER 240	76.20	47.63	47.63	9.5	72.4	62.4	23.81	47.90	55.50	–	726.0	132.0	25.63
DUPLEX													
SUPER 80-2	25.40	15.88	15.88	3.2	24.1	20.8	7.94	30.90	33.90	29.3	169.0	31.7	5.62
SUPER 100-2	31.75	19.05	19.05	4.0	30.1	26.0	9.54	37.70	40.80	35.8	255.0	51.7	8.38
SUPER 120-2	38.10	22.23	25.40	4.8	36.2	31.2	11.11	47.60	51.60	45.4	373.0	66.7	12.44
SUPER 140-2	44.45	25.40	25.40	5.6	42.2	36.4	12.71	51.35	56.15	48.9	490.0	91.7	15.92
SUPER 160-2	50.80	28.58	31.75	6.4	48.2	41.6	14.29	61.15	66.15	58.5	628.0	120.0	21.43
SUPER 200-2	63.50	39.69	38.10	8.0	60.3	52.0	19.85	74.85	80.65	71.6	981.0	160.0	34.91
SUPER 240-2	76.20	47.63	47.63	9.5	72.4	62.4	23.81	91.90	99.40	87.8	1450.0	225.0	50.88
TRIPLEX													
SUPER 80-3	25.40	15.88	15.88	3.2	24.1	20.8	7.94	45.60	48.50	29.3	253.0	46.6	8.40
SUPER 100-3	31.75	19.05	19.05	4.0	30.1	26.0	9.54	55.65	58.75	35.8	382.0	76.0	12.57
SUPER 120-3	38.10	22.23	25.40	4.8	36.2	31.2	11.11	70.40	74.40	45.4	559.0	98.1	18.64
SUPER 140-3	44.45	25.40	25.40	5.6	42.2	36.4	12.71	75.85	80.75	48.9	735.0	135.0	23.84
SUPER 160-3	50.80	28.58	31.75	6.4	48.2	41.6	14.29	90.45	95.45	58.5	941.0	177.0	32.10
SUPER 200-3	63.50	39.69	38.10	8.0	60.3	52.0	19.85	110.75	116.45	71.6	1470.0	235.0	52.44
SUPER 240-3	76.20	47.63	47.63	9.5	72.4	62.4	23.81	135.85	143.15	87.8	2180.0	331.0	76.11

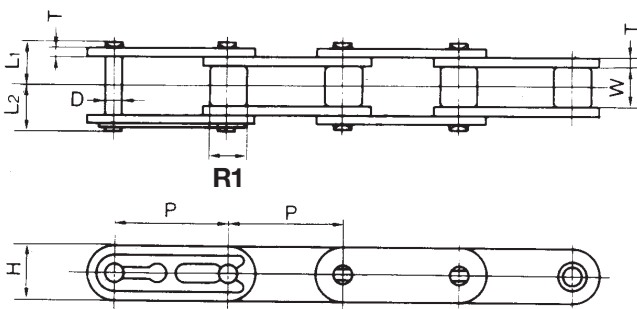
- Not: 1. Halvlänk tillverkas ej./ Offset links are not available
 2. Lås med presspassning levereras som standard./ Press-fit type connecting Links will be supplied
 3. Kedjan levereras nitad som standard./ Riveted type chain will be provided unless otherwise speifred



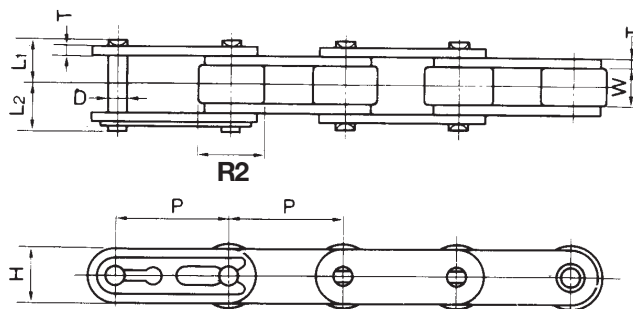
Chain No.	Pitch P	Roller dia. R	Inner Width W	Link Plate			Pin			Transverse Pitch C	Average tensile strength kN	Max allowable tension kN	Approx Mass kg/m
				T	H	h	D	L ₁	L ₂				
SIMPLEX													
SUPER 80H	25.40	15.88	15.88	4.00	24.1	20.8	7.94	18.30	20.90	—	98.1	20.6	3.29
SUPER 100H	31.75	19.05	19.05	4.80	30.1	26.0	9.54	21.80	24.50	—	145.0	32.4	4.88
SUPER 120H	38.10	22.23	25.40	5.60	36.2	31.2	11.11	26.95	30.55	—	196.0	42.2	6.94
SUPER 140H	44.45	25.40	25.40	6.40	42.2	36.4	12.71	28.90	33.10	—	255.0	56.9	8.88
SUPER 160H	50.80	28.58	31.75	7.15	48.2	41.6	14.29	33.95	38.45	—	324.0	73.5	11.72
SUPER 200H	63.50	39.69	38.10	9.50	60.3	52.0	19.85	42.90	48.10	—	598.0	100.0	19.68
SUPER 240H	76.20	47.63	47.63	12.70	72.4	62.4	23.81	54.80	62.30	—	922.0	139.0	30.47
DUPLEX													
SUPER 80H-2	25.40	15.88	15.88	4.00	24.1	20.8	7.94	34.50	37.90	32.6	196.0	35.0	6.52
SUPER100H-2	31.75	19.05	19.05	4.80	30.1	26.0	9.54	41.40	44.10	39.1	290.0	55.0	9.51
SUPER120H-2	38.10	22.23	25.40	5.60	36.2	31.2	11.11	51.15	55.15	48.9	392.0	71.7	13.51
SUPER140H-2	44.45	25.40	25.40	6.40	42.2	36.4	12.71	54.95	59.50	52.2	510.0	96.7	17.38
SUPER160H-2	50.80	28.58	31.75	7.15	48.2	41.6	14.29	64.90	69.50	61.9	647.0	125.0	22.97
SUPER200H-2	63.50	39.69	38.10	9.50	60.3	52.0	19.85	82.05	87.30	78.3	1200.0	170.0	38.48
SUPER240H-2	76.20	47.63	47.63	12.70	72.4	62.4	23.81	105.30	113.30	101.2	1840.0	237.0	59.77
TRIPLEX													
SUPER 80H-3	25.40	15.88	15.88	4.00	24.1	20.8	7.94	50.75	53.85	32.6	294.0	51.5	9.75
SUPER100H-3	31.75	19.05	19.05	4.80	30.1	26.0	9.54	60.95	63.75	39.1	435.0	80.9	14.14
SUPER120H-3	38.10	22.23	25.40	5.60	36.2	31.2	11.11	75.80	79.60	48.9	588.0	105.0	20.09
SUPER140H-3	44.45	25.40	25.40	6.40	42.2	36.4	12.71	81.05	85.60	52.2	765.0	142.0	25.88
SUPER160H-3	50.80	28.58	31.75	7.15	48.2	41.6	14.29	95.40	100.60	61.9	971.0	184.0	34.22
SUPER200H-3	63.50	39.69	38.10	9.50	60.3	52.0	19.85	120.92	126.18	78.3	1790.0	250.0	57.29
SUPER240H-3	76.20	47.63	47.63	12.70	72.4	62.4	23.81	155.06	163.18	101.2	2770.0	348.0	89.09

Not: 1. Halvlänk tillverkas ej./ Offset links are not available
 2. Lås med presspassning levereras som standard./ Press-fit type connecting Links will be supplied
 3. Kedjan levereras nitad som standard./ Riveted type chain will be provided unless otherwise speified

TSUBAKI ANSI DOUBLE PITCH CONVEYOR CHAINS



S-Roller



R-Roller

Chain No.	Roller type	Pitch P	Inner width W	Roller dia.		Pin			Link plate		Average tensile strength kN	Max allowable tension kN	Approx Mass	
				R1	R2	L1	L2	D	Height H	Thickness T			S-Roller	R-Roller
				RF2040	S.R	25.40	7.95	7.94	15.88	8.25			9.95	3.97
RF2050	S.R	31.75	9.53	10.16	19.05	10.30	12.0	5.09	15.0	2.0	27.4	4.31	0.84	1.30
RF2060	S.R	38.10	12.70	11.91	22.23	14.55	16.55	5.96	17.2	3.2	40.2	6.27	1.51	2.19
RF2080	S.R	50.80	15.88	15.88	28.58	18.30	20.90	7.94	23.0	4.0	68.6	10.70	2.41	3.52
RF2100	S.R	63.50	19.05	19.05	39.69	21.80	24.50	9.54	28.6	4.8	108.0	17.10	3.54	5.80
RF2120	S.R	76.20	25.40	22.23	44.45	26.95	30.55	11.11	34.4	5.6	151.0	23.90	5.08	8.13
RF2160	S.R	101.60	31.75	28.58	57.15	33.95	38.45	14.29	43.2	7.15	258.0	40.90	8.96	13.70

Attachment dimensions next page.

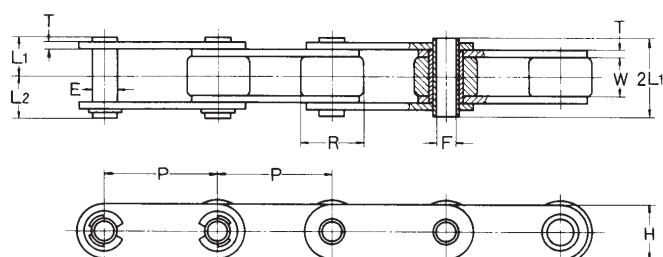
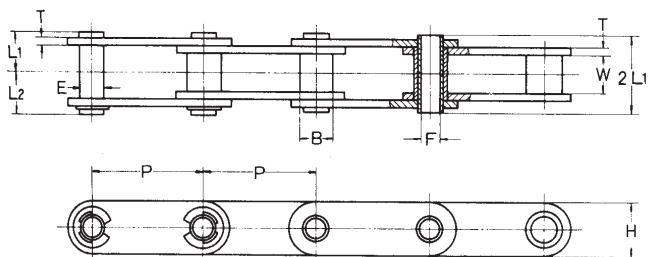
TSUBAKI ANSI HOLLOWPIN CHAINS

TYP / Type
RF



Chain types

Standard • Nickel • Stainless Steel • Lamda (Λ)
Standard attachments are available for both single and double pitch.

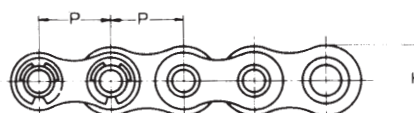
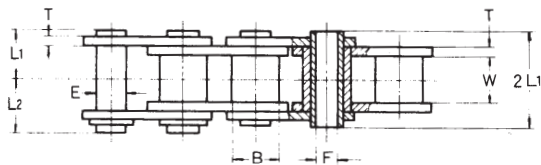


Bush type S

Bush type R

TSUBAKI		Pitch P	Inner width W	Bush dia. B	S Roller dia. R	Pin				Link Plate		Average tensile strength kN	Max allowable tension			Approx Mass Kg/m	
Chain No.						Outer dia. E	Inner dia. F (min)	L ₁	L ₂	Height H	Thick-ness T		NP	SS	Λ	kedja Chain	rulle Roller
RF2040HP	RFC2040HP-Λ	25.40	7.95	7.94	15.88	5.680	4.00	8.00	9.50	12.0	1.5	10.8	1.76	0.44	1.47	0.46	0.82
RF2050HP	RFC2050HP-Λ	31.75	9.53	10.16	19.05	7.220	5.12	10.05	11.65	15.0	2.0	19.6	3.14	0.67	2.55	0.75	1.21
RF2060HP	RFC2060HP-Λ	38.10	12.70	11.91	22.23	8.380	5.99	12.55	14.25	17.2	2.4	26.5	4.21	1.03	3.43	1.38	2.06
RF2080HP	-	50.80	15.88	15.88	28.58	11.375	8.02	16.25	17.80	23.0	3.2	48.0	7.64	1.76	-	1.80	2.81

TYP / Type
RS



TSUBAKI		Pitch P	Inner width W	Bush dia. B	Pin				Link plate		Avrage tensil strength kN	Max allowable tension			Approx Mass kg/m
Chain No.					Outer dia. E	Inner dia. F (min)	L ₁	L ₂	Height H	Thick-ness T		NP	SS	Λ	
															NP
RS40HP	RSC40HP-Λ	12.70	7.95	7.94	5.68	4.00	8.00	9.50	12.0	1.5	10.8	1.76	0.44	1.47	0.53
RS50HP	RSC50HP-Λ	15.875	9.53	10.16	7.22	5.12	10.05	11.65	15.0	2.0	19.6	3.14	0.67	2.55	0.86
RS60HP	RSC60HP-Λ	19.05	12.70	11.91	8.38	5.99	12.55	14.25	18.1	2.4	26.5	4.21	1.03	3.43	1.27

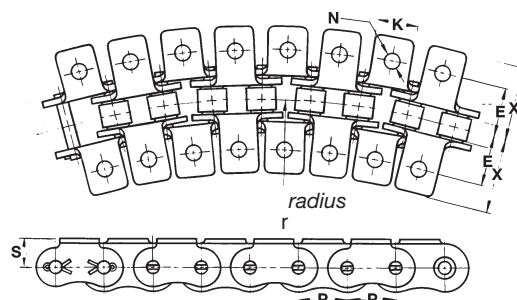
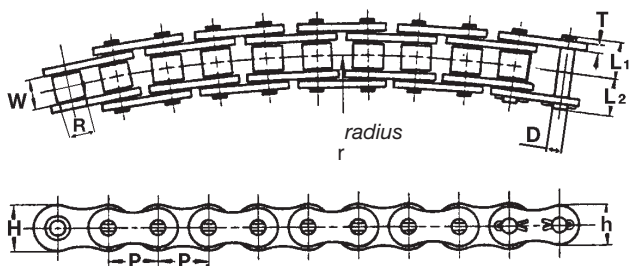
Reservation for dimensional changes
Dimensions in mm

TSUBAKI ANSI CURVED CHAINS



Chain No.	Pitch P	Roller dia. R	Inner width W	Pin			Side plate			Min radius r	
				D	L₁	L₂	L₁+L₂	T	H		h
RS35CU Δ	9.525	5.08	4.78	3.18	6.05	7.65	13.7	1.25	9.0	7.8	254
RS40CU	12.700	7.94	7.95	3.97	8.45	9.75	18.2	1.50	12.0	10.4	350
RS50CU	15.875	10.16	9.53	5.09	10.60	12.40	23.0	2.00	15.0	13.0	400
RS60CU	19.050	11.91	12.70	5.96	13.25	15.05	28.3	2.40	18.1	15.6	500
RS80CU	25.400	15.88	15.88	7.94	16.75	20.05	36.8	3.20	24.1	20.8	600

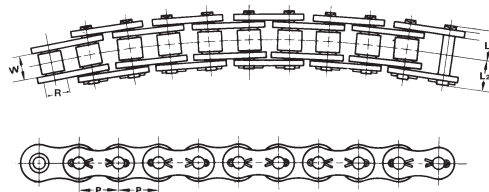
Δ Hylskedja / Bush chain



Chain No.	Genomsn. draghåll. fasthet Average tensile strength kN	Max tillåten belastning Max allowable tension kN	Ca. vikt Approx Mass kg/m	Attachment Measure					Additional mass a piece	
				C	N	O	S	X	A att.	K att.
RS35CU Δ	8.05	0.93	0.31	9.5	7.9	3.4	6.35	14.5	0.0008	0.0016
RS40CU	15.50	1.86	0.61	12.7	9.5	3.6	8.0	18.0	0.002	0.004
RS50CU	24.10	2.85	1.01	15.9	12.7	5.2	10.3	23.7	0.003	0.006
RS60CU	34.90	4.02	1.40	19.1	15.9	5.2	11.9	28.5	0.007	0.014
RS80CU	61.60	6.97	2.47	25.4	19.1	6.8	15.9	37.1	0.013	0.026

Δ Hylskedja/ Bush chain

FX KEDJA

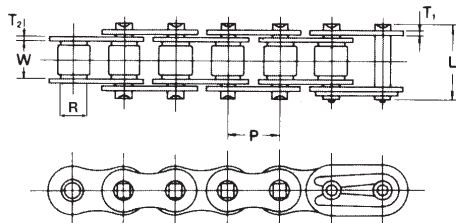


1. FX Chains are interchangeable with ANSI Standard chains and can operate on the same ANSI standard sprocket.

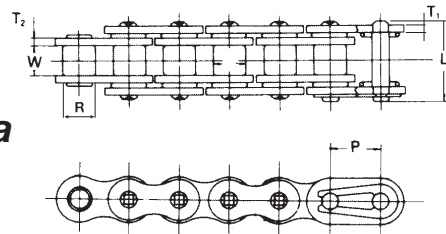
2. Increased clearance between the pins and bushings allows the chains to accommodate a 100mm lateral side bow and an 8.0 degrees twist per 1,200 mm of chain.

Chain No.	Pitch R	Roller dia. R	Inner width W	Pin		Average tensile strength kN	Approx Mass kg/m
				L₁	L₂		
RS100FX	31.75	19.05	19.05	19.75	22.85	107	3.74
RS120FX	38.10	22.23	25.40	24.90	28.90	151	5.49
RS140FX	44.45	25.40	25.40	26.90	31.70	204	7.44
RS160FX	50.80	28.58	31.75	31.85	36.85	258	9.72
RS180FX	57.15	35.71	35.72	35.65	42.45	321	12.90

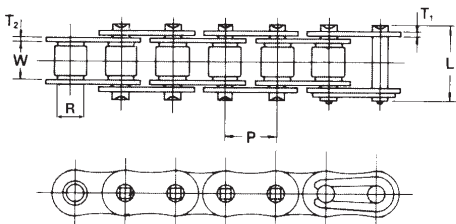
QR serie



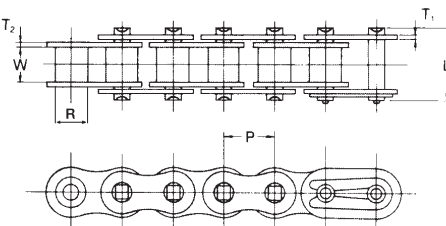
**O-ring serie
Omega**



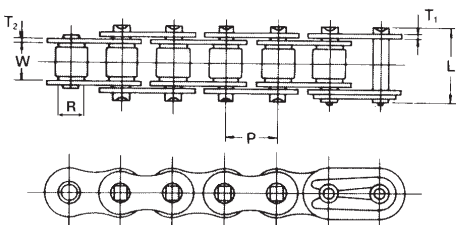
HQR serie



HSL serie



XQR serie

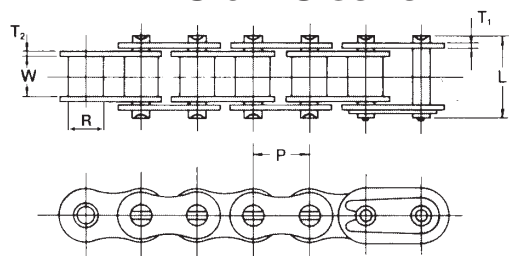


Chain No.	Pitch P	Roller dia. R	Inner width W	Thickness outer link T₁	Thickness inner link T₂	Pin lenght L	Avrage tensile strength kP	Weight kg/m
420	12.700	7.77	6.35	1.50	1.50	15.80	1,900	0.59
425	12.700	7.94	7.94	1.50	1.50	18.20	1,900	0.64
428	12.700	8.50	7.94	1.50	1.50	18.10	1,900	0.75
428H	12.700	8.50	7.94	2.00	2.00	20.00	2,400	0.81
520QR	15.875	10.16	6.35	2.00	2.00	20.10	3,200	0.95
525QR	15.875	10.16	7.94	2.00	2.00	20.90	3,200	0.99
530QR	15.875	10.16	9.53	2.00	2.00	22.80	3,200	1.04
630QR	19.050	11.91	9.53	2.40	2.40	24.80	4,550	1.39
530HQR	15.875	10.16	9.53	2.40	2.40	23.90	4,820	1.41
520XQR	15.875	10.16	6.35	2.00	2.00	20.10	3,200	0.95
630 Ω Omega	19.050	11.91	9.53	2.40	2.40	26.30	4,550	1.50
420HSL	12.700	7.77	6.35	1.50	2.00	18.20	1,850	0.64
428HSL	12.700	8.51	7.94	1.50	2.00	19.60	1,700	0.72
520HSL	15.875	10.16	6.35	2.00	2.80	21.60	3,200	1.05
525HSL	15.875	10.16	7.94	2.00	2.80	23.15	3,200	1.10
530HSL	15.875	10.16	9.53	2.00	2.80	24.70	3,200	1.14
630HSL	19.050	11.91	9.53	2.40	3.50	27.30	4,550	1.58

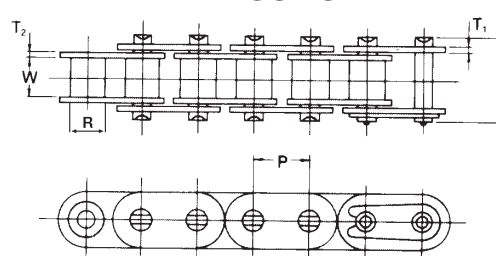
The chains can also be supplied Nickel plated.
For connecting the chain on motorcycles with high power, pin link should only be used.

TSUBAKI MOTORCYCLE CHAINS

RS & BS serie



BF serie

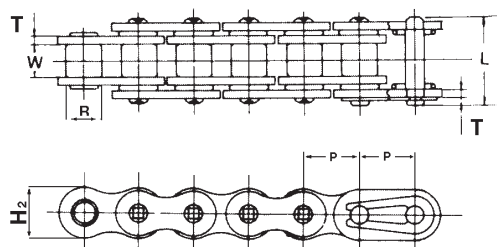


Chain No.	Pitch P	Roller dia. R	Inner width W	Thickness outher link T₁	Thickness inner link T₂	Pin lenght L	Average tensile strength KP	Weight kg/m
RS25	6.350	3.30	3.18	0.75	0.75	7.6	450	.13
RS25H *	6.350	3.30	3.18	0.75	1.00	8.2	600	.16
RS05M *	7.774	4.59	4.90	1.00	1.27	11.5	880	.30
BS05MH	7.774	4.59	4.90	1.27	1.50	12.5	1000	.34
BF05M *	7.774	4.59	4.90	1.00	1.27	11.5	910	.32
BF05T	8.000	4.71	4.61	1.00	1.27	11.5	880	.32

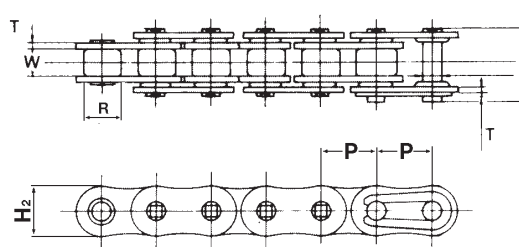
* Endast nitlänk./ Pin Link only

O-ring chains Alpha & Sigma

Chain No.	Pitch P	Roller dia. R	Inner width W	Thickness outher link T	Height outher link H₁	Height inner link H₂	Pin length L	Average tensile strength KP	Weight kg/m
428 α	12.700	8.50	7.94	1.8	11.0	12.5	20.10	2400	0.83
520 α	15.875	10.22	6.35	2.0	13.1	15.1	21.25	3600	0.98
525 α	15.875	10.22	7.94	2.2	13.1	15.1	22.55	3600	1.11
530 α	15.875	10.22	9.53	2.4	13.1	15.1	24.90	4300	1.30
520 Σ	15.875	10.22	6.35	2.4	15.3	15.3	21.95	4000	1.31
525 Σ	15.875	10.22	7.94	2.4	15.3	15.3	23.25	4300	1.36
530 Σ	15.875	10.22	9.53	2.4	15.3	15.3	24.80	4600	1.44



**Alpha
α**



**Sigma
Σ**

For connecting the chain on motorcycles with high power, pin link should only be used.